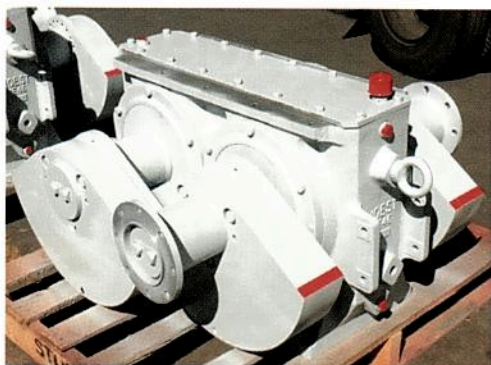


## Joest introduces new exciter gearbox

Specialist vibrating equipment supplier Joest South Africa has introduced an exciter gearbox that has been completely redesigned by its in-house research and development team, taking into account input from mining customers with regard to increased uptime and reliability resulting in greater tonnage throughput.



Specialist vibrating equipment supplier Joest South Africa has introduced a new exciter gearbox.

“Joest South Africa’s philosophy of ‘Engineered Solutions’ ensures that we fully understand each customer’s specific needs, delivering a customised solution, which ensures that downtime is reduced dramatically,” says Kim Schoepflin, MD of the company.

A significant advantage of the new exciter gearbox is that it is fully compatible with the previous model sold by Joest South Africa. “In fact, it is important to note that the old and new model can both be included on a single piece of vibrating equipment,” Theresa Walton, General Manager: Service, says.

Major design improvements include an enhanced housing design that provides for longer in-service life. This is in addition to thicker mounting feet and stiffener ribs, as well as rigid weight cover mountings. The internal components feature improved tolerances and surface finishes.

The material is cast specifically to Joest South Africa’s specifications for robustness. “Joest South Africa places a major emphasis on engineering and manufacturing its products to the most stringent quality standards,” Schoepflin adds. Joest’s new exciter gearbox is assembled in-house at its newly expanded exciter gearbox assembly and refurbishment facility.

Furthermore, a double-flange configuration reduces installation time and configuration errors on site. This also simplifies spare parts requirements, as previously both left-hand and right-hand configurations had to be kept in stock.

The exciter gearbox range reaches noise levels of less than 85 dB.

Joest South Africa is a locally owned OEM that designs and fabricates vibrating screens and feeders in-house. It has a 39-year track record of developing and supplying products for the African mining bulk materials handling market.

Kim Schoepflin, Joest South Africa, tel (+27 11) 923-9000

## Loco management system from Becker Mining

Becker Mining South Africa’s collision avoidance system (CAS) now encompasses the newly launched loco management system (LMS) with advanced communication features designed to provide additional safety monitoring and functionality.

“Becker Mining’s loco management system, which combines all guard and loco signals on the user displays, acts as a driver and guard communications system to enforce operational procedures for improved safety during operation of underground trains,” says Andrew Trentelman, Senior General Manager: Electronics at Becker Mining South Africa. “This LMS system allows the flow of traffic during safe operating condi-

tions and has programmable parameters that automatically intervene in potentially dangerous conditions.

“Although the loco driver is always responsible for controlling the locomotive, the LMS is programmed to check the operator, acting as a driving aid to prevent trampling accidents. This system is equipped with a global emergency stop facility and is able to halt other locomotives within radio range remotely from the guard car, loco or via handheld units. The LMS advises drivers when to slow down, bring the loco to a halt or do an emergency stop. Parameters which measure true speed are programmed for different areas of haulage and for various

speed limitations as required.”

The LMS also provides reliable proximity detection and collision avoidance warnings between locomotives, trackless machines and pedestrians. Various events during operation and important parameters are logged as real time data and downloaded for analysis and evaluation.

The user interface, which comprises an LCD screen and six function buttons, connects to the main unit via an umbilical cord. A colour display indicates relevant information, including the speed of the locomotive in km/h, battery conditions and proximity detections, as well as errors and events.

Becker Mining South Africa, tel (+27 11) 617-6300

## Index to advertisers

Allied Crane Hire	49	ContiTech	50	MMD Mineral Sizing	55
APE Pumps	45	DRA Global	IFC/1	New Concept Mining	OBC
Barloworld Metso	14	FLSmith	43	Novatek	13
Barloworld Power	40	Hytec Holdings	47	Outotec	16
Beka Schréder	IBC	Joy Global	37	Stalcor	11
Beowolf Mining	36	Komatsu	OFC	Tega Industries	28
BME	4	M & J Engineering	54	Veolia Water Solutions	30
Botswana Resource Sector Conference	24	Marthinussen & Coutts	53	WorleyParsons	21
Brelko Conveyor Products	19	MDM Engineering	9	Zest WEG Group	2